



Welcome

TO OUR

BERNIERES-SUR-MER CENTRE

Our centre « *La Closerie des Djinns* » in BERNIERES-SUR-MER (located on the Côte de Nacre, on the Canadian D-Day landings) is in the heart of the village, facing a beautiful church, surrounding with shops and **only 400m from the sea.**

Head Office : UNCMT - 4 avenue du Parc Saint André - 14200 HEROUVILLE SAINT CLAIR
02 31 46 80 40 - www.uncmt.fr



LA CLOSERIE DES DJINNS



GEOGRAPHIC LOCATION

UNCMT « La Closerie des Djinns »
Avenue Général Leclerc (place de l'Eglise)
14990 BERNIERES SUR MER
Tel. : + 33 2 31 96 46 48
(Information and bookings +33 2 31 46 80 40)
Email : bernieressurmer@uncmt.fr



GPS Coordinates: 49°19'52.36"N 0°25'27.86"W

Caen : 20 km

Paris : 255 km

Closest train station : Caen 20 km

Ferry Terminal : Ouistreham 15 km

Distance from the sea : 400 m (accessible by foot)



**LA
CLOSERIE
DES
DJINNS**



The centre is entirely enclosed. It respects all local and national health, safety, fire and travel industry regulations, for welcoming groups. **The Director** is present on site during the group's stay **(including all night long).** **Our certifications** are available on our website : [click here.](#)



CATERING

Cold chain – all menus are established one month prior to the group's arrival, according to allergies and special diets (for the participants who have allergic reactions to some ingredients, or who have a special diet (coeliac for example), special dishes (guaranteed free from main allergens) are automatically ordered, with an extra-charge per meal – please contact us)

Regular schedules for breakfast, lunch and dinner :

8:00 AM, 12:00 AM and 7:00 PM

1 dining hall with a 100 people capacity.

ACCOMODATION

The total capacity of the centre is **up to 105 beds**, allocated onto two buildings. Each building has an independent entrance.

All bedrooms are en-suite rooms with shower, sink, toilets. **BUNK BEDS**

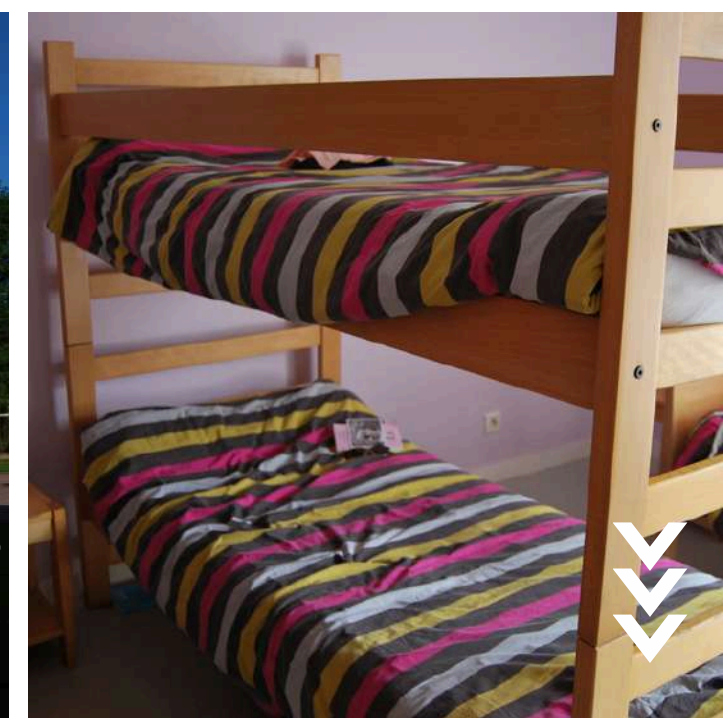
LES TOURTERELLES :

- **18 rooms** on the 1st floor with 4 beds.

LES HIRONDELLES :

- **8 rooms** on the ground floor and 1st floor with 3 to 6 beds.
- **1 adapted room** for people with reduced mobility.

The drivers are given individual rooms in another building, away from the group. Showers and toilets on the landing.

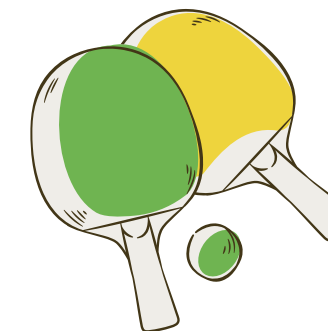




EQUIPMENTS

INDOORS :

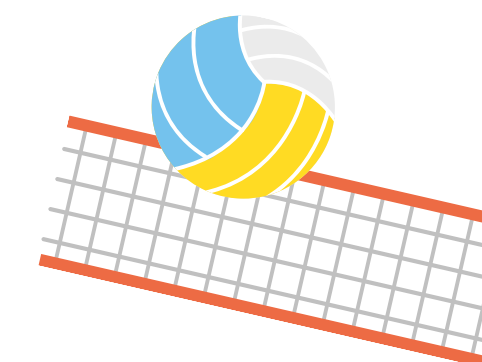
- 1 relaxing area for the teachers with coffee, tea, mini fridge.
- 1 large activity room (table tennis, table football...)
- 2 classrooms with board and tv



Videoprojector on demand.

OUTDOORS:

- 1 terrain de volley / badminton
- 1 terrain de basketball
- 1 terrain de pétanque



NEARBY ACTIVITES :

- Tennis court
- French bowls pitch
- Skate park
- Multipurpose fitness room



(Requests must be made to the town to use these courts)

- Sailing club
- Riding school in Bernières sur Mer and Courseulles sur Mer
- Aquatic spaces in Douvres-la-Délivrande and Caen
- Rope park in Reviers





Welcome

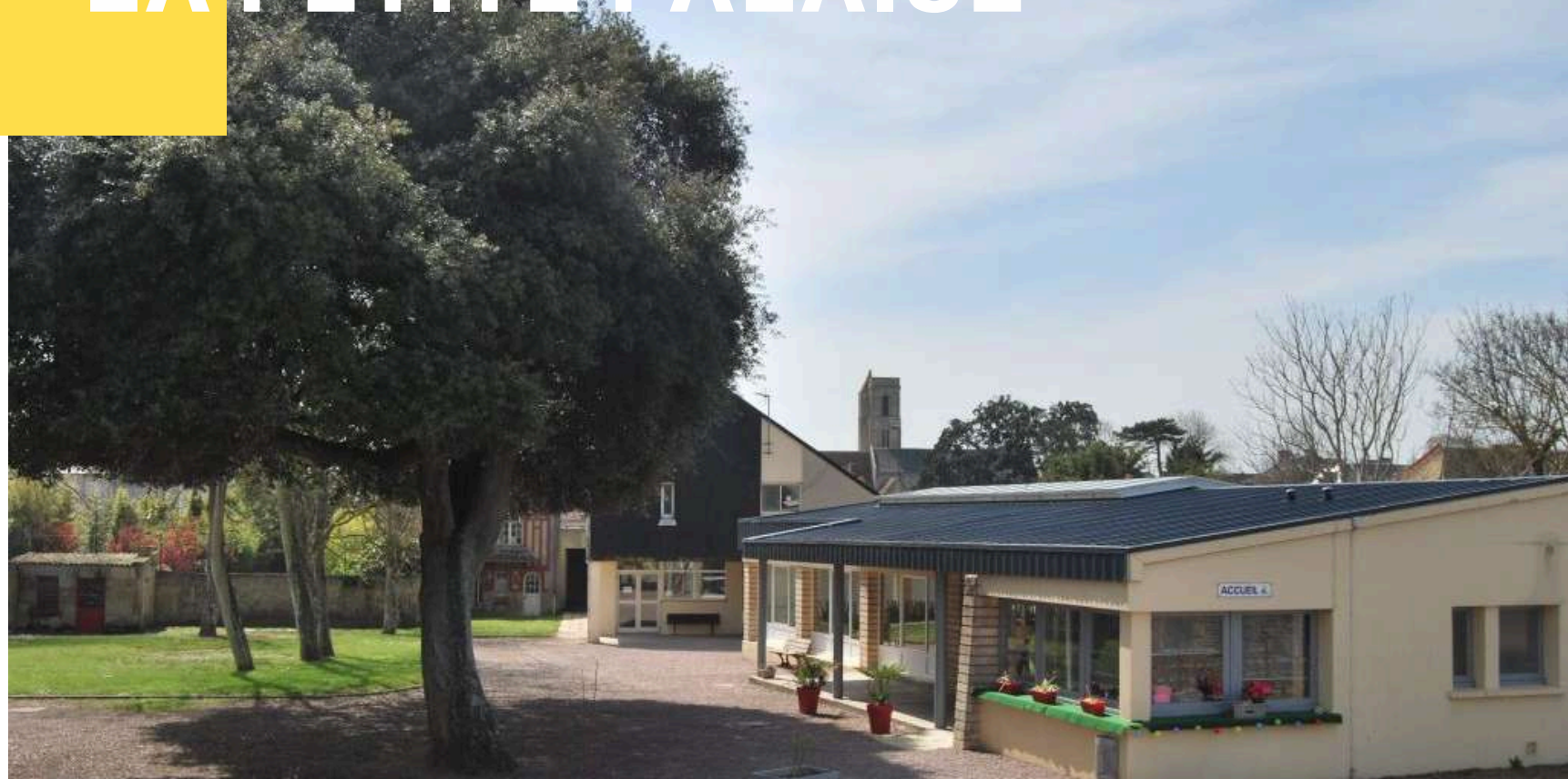
TO OUR
LION SUR MER CENTRE

Our centre « *La Petite Falaise* » in LION SUR MER (small seaside resort on the Côte de Nacre) is situated 50m **away from the seaside.**

Head Office : UNCMT - 4 avenue du Parc Saint André - 14200 HEROUVILLE SAINT CLAIR
02 31 46 80 40 - www.uncmt.fr



LA PETITE FALAISE



GEOGRAPHIC LOCATION

UNCMT « La Petite Falaise »

24 rue Galliéni

14780 LION SUR MER

Tel. : + 33 2 31 97 21 49

(Information and Booking + 2 31 46 80 40)

Email : lionsurmer@uncmt.fr



GPS Coordinates: 49°18'05.3"N 0°18'51.0"W

Caen : 25 km

Paris : 255 km

Closest train station : Caen train station at 25 km

Car-Ferry : Ouistreham Ferry Terminal at 4 km

Distance from seaside : 50m (accessible by foot)



The centre is entirely enclosed. It respects all local and national health, safety, fire and travel industry regulations, for welcoming groups. **The Director** is present on site during the group's stay **(including all night long).** **Our certifications** are available on our website : [click here](#).



**LA
PETITE
FALAISE**



CATERING

Cold chain – all menus are established one month prior to the group's arrival, according to allergies and special diets (for the participants who have allergic reactions to some ingredients, or who have a special diet (coeliac for example), special dishes (guaranteed free from main allergens) are automatically ordered, with an extra-charge per meal – please contact us)

Regular schedules for breakfast, lunch and dinner :

8:00 AM, 12:00 AM and 7:00 PM

1 dining hall with a **100 people capacity**. Self-service system, with choices for starters, cheese and dessert. One unique hot main course.

ACCOMODATION

The total capacity of the centre is up to **85 beds**, allocated onto two buildings. Each building has an independent entrance.

LES FRÉGATES :

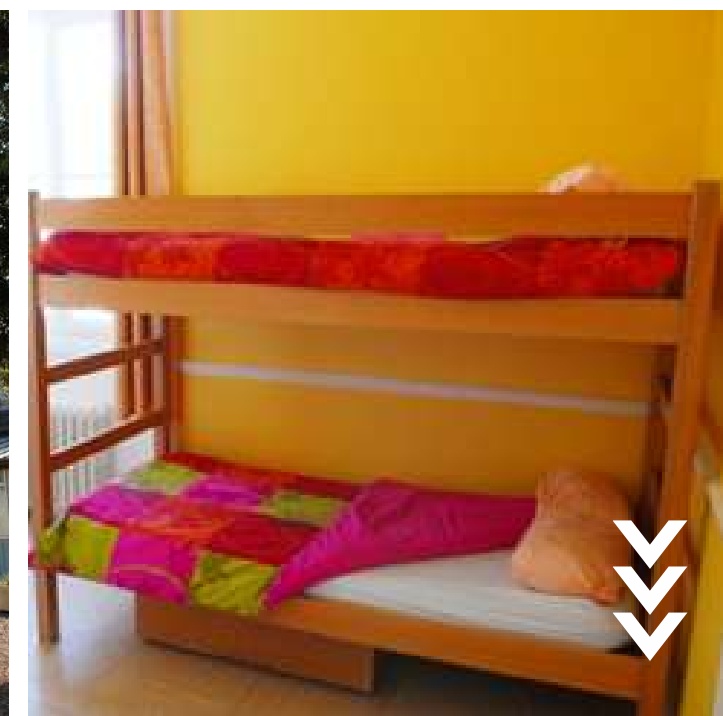
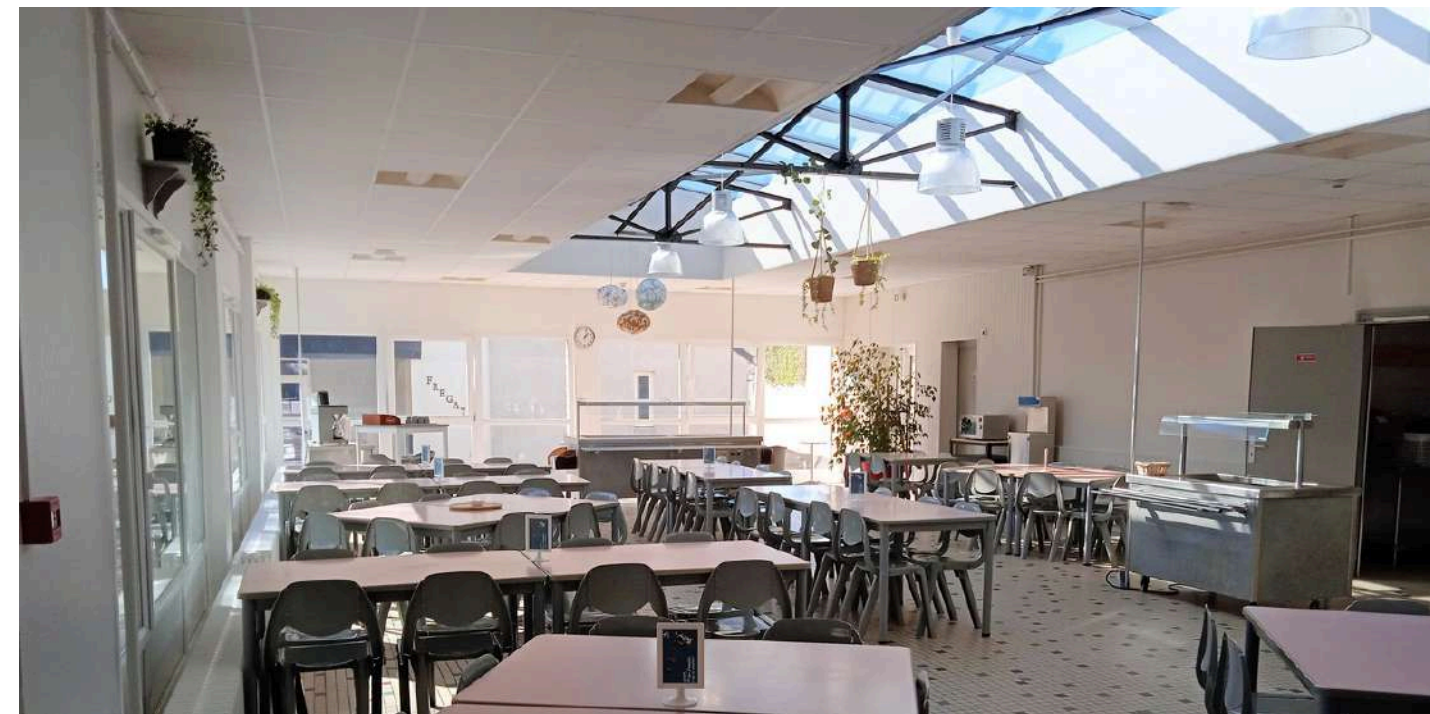
All the rooms are en-suite rooms with shower, sink and toilets.

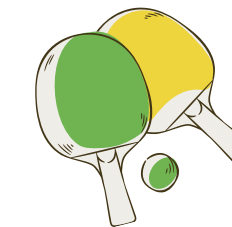
- **5 rooms** on the ground floor with 4 individual beds. Bunk beds. **2 adapted rooms** for people with reduced mobility.
- **5 mezzanine rooms** on the 1st floor with 6 individual beds. Bunk beds + **5 single rooms** for the adults.

LE CHÂTEAU :

The drivers are given individual rooms in another building, away from the group. Showers and toilets on the landing.

- **11 rooms** on 2 levels with 2 to 8 individual beds. Bunk beds. **Showers and toilets on the landings.**

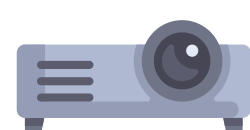




EQUIPMENTS

INDOORS :

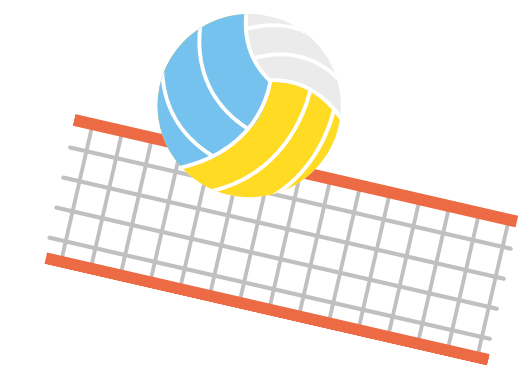
- 3 class/activity rooms with board and TV



Video projector on demand.

OUTDOORS :

- 1 volleyball / badminton court
- 1 outdoor tennis table
- 1 room with games/beach equipments on demand^a



NEARBY ACTIVITIES :

- Tennis court
- Football court
- Basketball court
- Multipurpose fitness room
- Sailing club
- Fitness circuit (free access)
- Maison de la Baleine (in Luc sur Mer)
- Ouistreham Lighthouse
- Ouistreham "Grand Bunker"

(Requests must be made to the town to use these courts)






Welcome

TO OUR

GRANDCAMP-MAISY CENTRE



LES AIGUES-MARINES



Our centre « *Les Aigues-Marines* » in GRANDCAMP-MAISY (situated on the West coast of Calvados, near La Pointe du Hoc), is ideally located in the heart of the village, **facing the sea.**

Head Office: UNCMT - 4 avenue du Parc Saint André - 14200 HEROUVILLE SAINT CLAIR
02 31 46 80 40 - www.uncmt.fr



GEOGRAPHIC LOCATION



UNCMT « Les Aigues-Marines »

Quai Crampon

14450 GRANDCAMP-MAISY

Tel. : + 33 2 31 22 60 01

(Information and Booking +33 2 31 46 80 40)

Email : grandcampam@uncmt.fr

GPS Coordinates: 49°23'20.9"N 1°02'38.0"W

Caen : 60 km

Paris : 290 km

Closest train station : Bayeux 30 km

Car-Ferry : Ferry Terminal Ouistreham 65 km

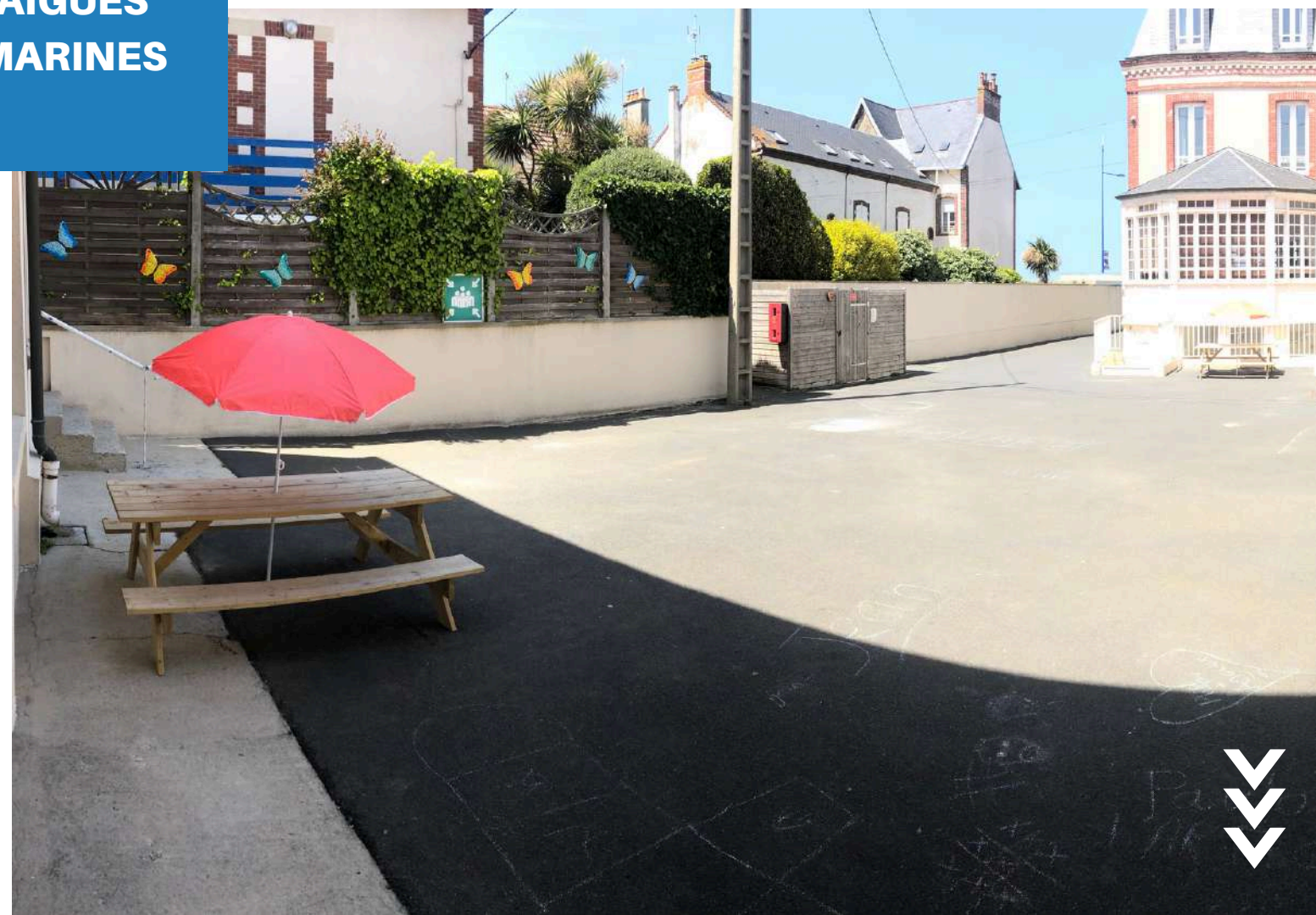
Distance from the seaside : facing it



The centre is entirely enclosed. It respects all local and national health, safety, fire and travel industry regulations, for welcoming groups. **The Director** is present on site during the group's stay **(including all night long)**. **Our certifications** are available on our website : [click here](#).



**LES
AIGUES
MARINES**



CATERING

Cold chain – all menus are established one month prior to the group's arrival, according to allergies and special diets (for the participants who have allergic reactions to some ingredients, or who have a special diet (coeliac for example), special dishes (guaranteed free from main allergens) are automatically ordered, with a extra-charge per meal – please contact us)

Regular schedules for breakfast, lunch and dinner :
8:00 AM, 12:00 AM and 7:00 PM

1 catering room with a 80-person capacity, **overlooking the sea.**

ACCOMODATION

The total capacity of the centre is up to 80 beds, allocated onto one building. Bedrooms with bunk beds.

1st Floor :

*Showers and toilets on the ground floor landing
(except one shower for the adults).*

- **17 rooms** with 2 to 4 beds.
Sink in each room

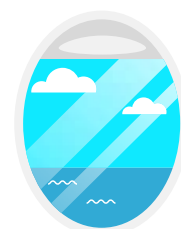
2nd Floor

*Showers and toilets on the ground floor landing
(except one shower for the adults).*

- **7 rooms** with 2 to 4 beds.
Sink in each room



The drivers are given individual en-suite rooms on the ground floor, away from the group.





EQUIPMENTS

INDOORS :

- 1 relaxing area for the teachers with coffee, tea, mini fridge.
- 1 class/activity room with a board and a tv (40-seat capacity)



Videoprojector on demand



OUTDOORS :

- Courtyard
- Beach-volley equipments on demand
- Picnic tables
- Beach just accross the street

NEARBY ACTIVITES :

- Tennis court
- Boules pitch
- Multipurpose fitness room
- Playground



(Requests must be made to the town to use these courts)



- Fish markets
- Sailing club





Welcome

TO OUR

GRANDCAMP-MAISY CENTRE

Our centre « *Les Quiéri-Quiérettes* » in GRANDCAMP-MAISY (situated on the West coast of Calvados, near La Pointe du Hoc), is ideally located in the heart of the village, **facing the sea.**

Head Office: UNCMT - 4 avenue du Parc Saint André - 14200 HEROUVILLE SAINT CLAIR
02 31 46 80 40 - www.uncmt.fr



LES QUIÉRI-QUIÉRETTES

GEOGRAPHIC LOCATION

UNCMT « Les Aigues-Marines »

Quai Crampon

14450 GRANDCAMP-MAISY

Tel. : + 33 2 31 22 60 79

(Information and Booking +33 2 31 46 80 49)

Email : grandcampqq@uncmt.fr



GPS Coordinates: 49°23'20.17"N 1°02'49.56.0"

Caen : 60 km

Paris : 290 km

Closest train station : Bayeux - 30 km

Car-Ferry : Ferry Terminal of Ouistreham - 65 km

Distance from the seaside : facing it



LES
QUIÉRI-
QUIÉRETTE



The centre respects all local and national health, safety, fire and travel industry regulations, for welcoming groups.

The Director is present on site during the group's stay (including all night long).

Our certifications are available on our website : [click here](#).



CATERING

Cold chain – all menus are established one month prior to the group's arrival, according to allergies and special diets (for the participants who have allergic reactions to some ingredients, or who have a special diet (coeliac for example), special dishes (guaranteed free from main allergens) are automatically ordered, with a extra-charge per meal – please contact us)

Regular schedules for breakfast, lunch and dinner :

8:00 AM, 12:00 AM and 7:00 PM

1 catering room with a 120-person capacity, **overlooking the sea.**

ACCOMODATION

The total capacity of the centre is up to 120 beds, allocated onto one building. Bedrooms with bunk beds.

Ground floor :

Showers and toilets on the landing

- **5 rooms** with 4 beds.
- **1 room** with 2 beds

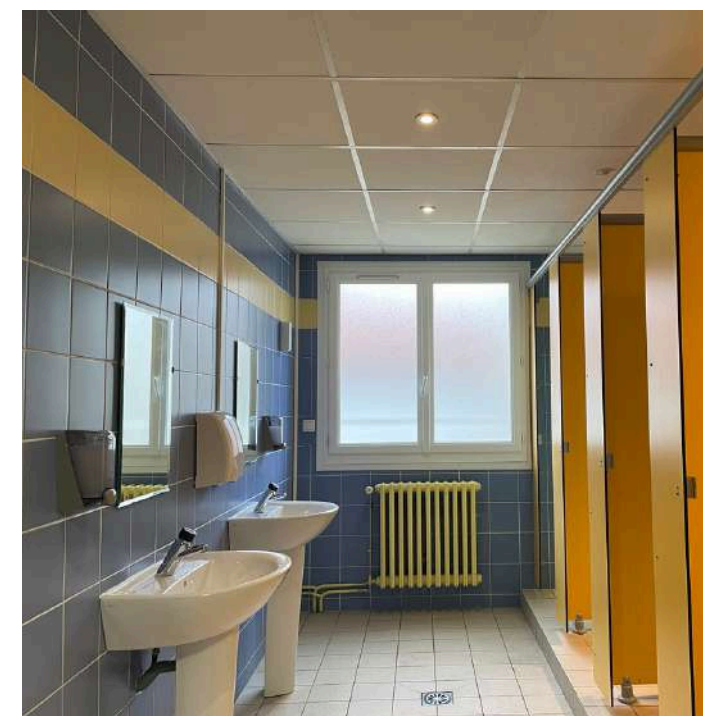
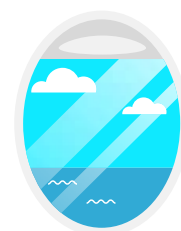
1st floor :

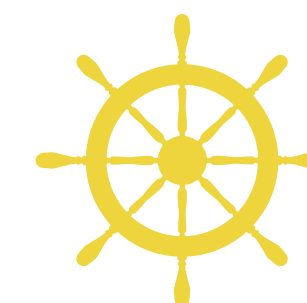
Showers and toilets on the landing

- **30 rooms** with 4 beds



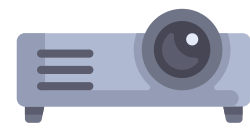
Drivers are given individual rooms on the 1st floor with a shower and a sink. Toilets are on the landing.





INDOORS :

- 1 relaxing area for the teachers with coffee, tea, mini fridge.
- 2 class/activity rooms with a board and a tv



Videoprojector on demand

OUTDOORS :

- 1 outside seating area facing the sea



NEARBY ACTIVITES :

- Tennis court
- Boules pitch
- Multipurpose fitness room
- Playground



- Fish markets
- Sailing club

(Requests must be made to the town to use these courts)





Welcome

TO OUR

VER SUR MER CENTRE

Our centre « *La Bambinière* » in VER SUR MER (small village located on the Calvados Coast, on the D-Day British Landing Beaches) is 450m far from the seaside.

Head Office : UNCMT - 4 avenue du Parc Saint André - 14200 HEROUVILLE SAINT CLAIR
02 31 46 80 40 - www.uncmt.fr



LA BAMBINIÈRE

GEOGRAPHIC LOCATION



UNCMT « La Bambinière »
rue de la Rivière
14114 VER SUR MER
Tel. : + 33 2 31 22 20 09
(Information and Booking + 33 2 31 46 80 40)
Email : versurmer@uncmt.fr

GPS Coordinates: 49°20'29.2"N 0°30'42.9"W

Caen : 30 km **Paris :** 260 km
Closest train station : Caen train station at 30km
Car-Ferry : Ouistreham Ferry Terminal at 24 km
Distance from the seaside : 450m (accessible by foot)



**LA
BAMBINIÈRE**



The centre is entirely enclosed. It respects all local and national health, safety, fire and travel industry regulations, for welcoming groups. **The Director** is present on site during the group's stay **(including all night long).** **Our certifications** are available on our website : [click here.](#)



CATERING

Cold chain – all menus are established one month prior to the group’s arrival, according to allergies and special diets (for the participants who have allergic reactions to some ingredients, or who have a special diet (coeliac for example), special dishes (guaranteed free from main allergens) are automatically ordered, with a extra-charge per meal – please contact us)

Regular schedules for breakfast, lunch and dinner :
8:00 AM, 12:00 AM and 7:00 PM.

1 dining hall with a 100 people capacity.

ACCOMODATION

The total capacity of the centre is **up to 100 beds**, allocated onto two buildings. Each building has an independent entrance.

LES ALBATROS :

Most of the bedrooms are en-suite rooms.

- **13 rooms** on 3 and a half levels, with 2 to 5 individual beds. Bunk beds.



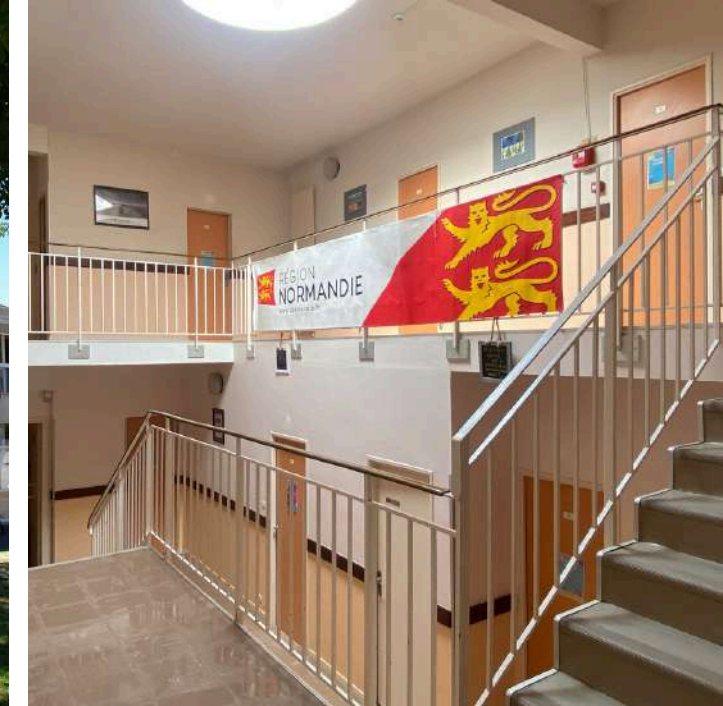
LES GOÉLANDS :

Most of the rooms are equipped with shower and sink. Toilets on the landing.

- **10 rooms** on ground floor and 1st floor, with 2 to 6 individual beds Bunk beds.
- **1 adapted room for people with reduced mobility.**

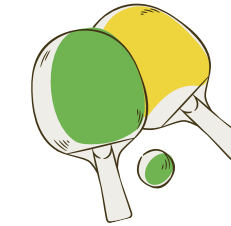


The drivers are given individual en-suite rooms, away from the group.





EQUIPMENTS



INDOORS :

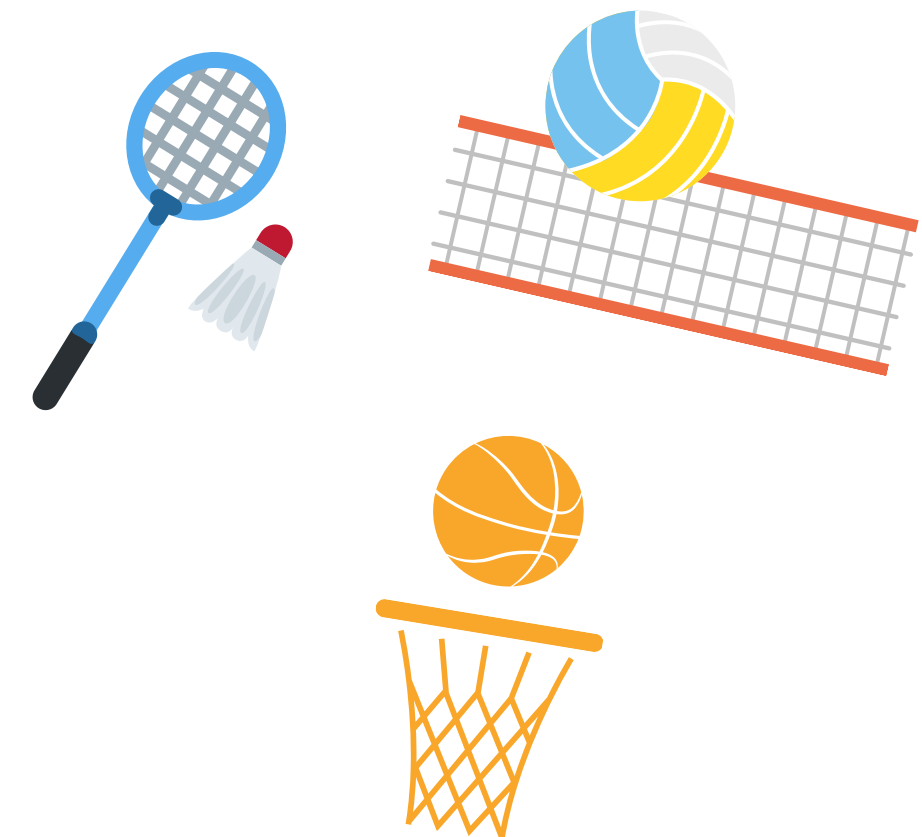
- 1 relaxation area for the teachers with tea, coffee, mini fridge..
- 2 classrooms with board and tv + 1 activity room with tennis and football tables



Video projector on demand.

OUTDOORS :

- 1 enclosed concrete playground with some green areas.
- 1 volleyball / badminton court
- 1 basketball court



NEARBY ACTIVITES:

- Tennis court
- Sailing Club
- Riding school at Bernières sur Mer and Courseulles sur Mer
- Aquatic complex at Douvres-la-Délivrande and Caen
- Adventure parks in the woods at Reviers and Hérouville-Saint-Clair






Welcome

TO OUR
TAILLEVILLE CENTRE

Our centre « *Le Manoir des Hauts Tilleuls* » in TAILLEVILLE is ideally situated **between the sea and the countryside.**

Head Office: UNCMT - 4 avenue du Parc Saint André - 14200 HEROUVILLE SAINT CLAIR
02 31 46 80 40 - www.uncmt.fr



LE MANOIR DES HAUTS TILLEULS

GEOGRAPHIC LOCATION



UNCMT « Le Manoir des Hauts Tilleuls »
Route de Saint-Aubin
14440 TAILLEVILLE
Tel. : + 33 2 31 37 30 38.
(Information and Booking + 2 31 46 80 40)
Email : tailleville@uncmt.fr



GPS Coordinates: 49°18'19.4"N 0°24'32.4"W

Caen : 17 km

Paris : 245 km

Closest train station : Caen train station at 20 km

Car-Ferry : Ouistreham ferry terminal at 15 km

Distance from the seaside : 3 km (45min walking distance – ask the « key to the fields » to the Director !)



The centre is entirely enclosed. It respects all local and national health, safety, fire and travel industry regulations, for welcoming groups. **The Director** is present on site during the group's stay **(including all night long).** **Our certifications** are available on our website : [click here.](#)



**LE
MANOIR
DES
HAUTS
TILLEULS**



CATERING

Cold chain – all menus are established one month prior to the group's arrival, according to allergies and special diets (for the participants who have allergic reactions to some ingredients, or who have a special diet (coeliac for example), special dishes (guaranteed free from main allergens) are automatically ordered, with a extra-charge per meal – please contact us)

Regular schedules for breakfast, lunch and dinner :

8:00 AM, 12:00 AM and 7:00 PM

2 dining halls with a 115 people capacity.

ACCOMODATION

The total capacity of the centre **is up to 120 beds**, allocated onto two buildings. Each building has an independent entrance.

LE MANOIR :

Most of the bedrooms are equipped with shower and sink. Toilets on the landing.

LES MOUETTES :

All the bedrooms are equipped with sinks. Showers and toilets on the landing.

- **17 rooms** on 1st and 2nd level, with 2 to 4 individual beds in each room. Bunk beds.



- **26 rooms** on 2nd floor, with 2 to 3 individual beds in each room. Bunk beds.
- **36 adapted** individual beds (no bunk beds) for the children under the age of 6.

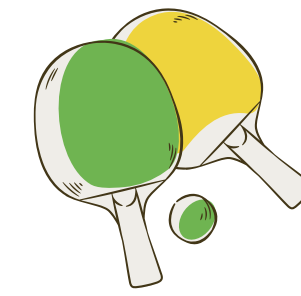


The drivers are given individual rooms in another building, away from the group (shower and toilet on the landing)





EQUIPMENTS



INDOORS :

- 1 relaxation area in the Mouettes building for the teachers with tea, coffee, mini fridge...
- 1 large playroom (table tennis, table football...)
- 4 class/activity rooms with board and tv
- 1 room used as a library.



Video projector on demand.

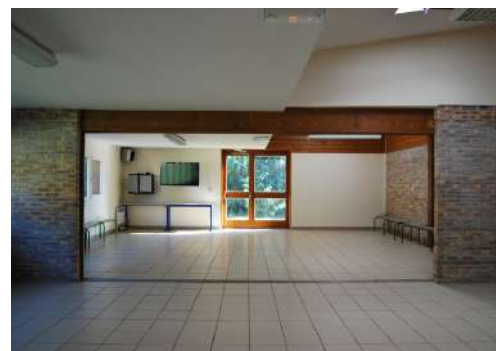
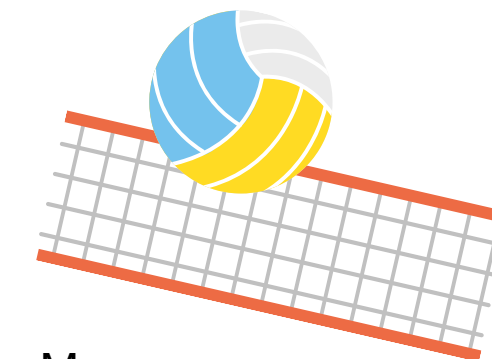
OUTDOORS :

- 1 playground for children with swing and slides...
- 1 volleyball / badminton court
- 1 basketball court
- 1 football court
- 1 city-stadium (novelty from 2017) where groups can practice a range of sport activities : football, handball, basketball, volleyball, tennis, badminton, field hockey



NEARBY ACTIVITES :

- Sailing Club
- Multipurpose fitness room
- Riding school at Bernières sur Mer and Courseulles sur Mer
- Aquatic complex at Douvres-la-Délivrande and Caen
- Adventure parks in the woods at Revières and Hérouville-Saint-Clair





Welcome

TO OUR
THAON CENTRE

Our centre « *Le Moulin de Barbières* » in THAON is **an ancient mill**, situated in the midst of 17 acres of woodland and copses, **where a quiet river flows through the park.**

Head Office : UNCMT - 4 avenue du Parc Saint André - 14200 HEROUVILLE SAINT CLAIR
02 31 46 80 40 - www.uncmt.fr



LE MOULIN DE BARBIÈRES



GEOGRAPHIC LOCATION



UNCMT « Le Moulin de Barbières »
Hameau de Barbières
14610 THAON
(Information and Bookings +33 2 31 46 80 49)
Email : lespinosa@uncmt.fr

GPS Coordinates: 49°15'32.5"N 0°26'42.2"W

- Caen :** 14 km
- Paris :** 245 km
- Train Station :** Caen - 14km
- Car-Ferry :** Ouistreham Ferry Terminal - 16km
- Distance from the sea :** 9 km (Courseulles-sur-Mer)



LE MOULIN DE BARBIÈRES



The centre is entirely enclosed. It respects all local and national health, safety, fire and travel industry regulations, for welcoming groups. **The Director** is present on site during the group's stay **(including all night long).**



CATERING

Cold chain – all menus are established one month prior to the group's arrival, according to allergies and special diets (for the participants who have allergic reactions to some ingredients, or who have a special diet (coeliac for example), special dishes (guaranteed free from main allergens) are automatically ordered, with a extra-charge per meal – please contact us)

Regular schedules for breakfast, lunch and dinner :

8:00 AM, 12:00 AM and 7:00 PM

1 catering room with a capacity of 100 people.

ACCOMODATION

The total capacity of the centre is up to 56 beds, allocated onto one building (ground floor and 1st floor). Bedrooms with bunk beds.

Ground floor :

4 rooms out of 5 are ensuite rooms.

- **5 rooms** with 2 to 7 beds
- **1 adapted room** for people with reduced mobility.

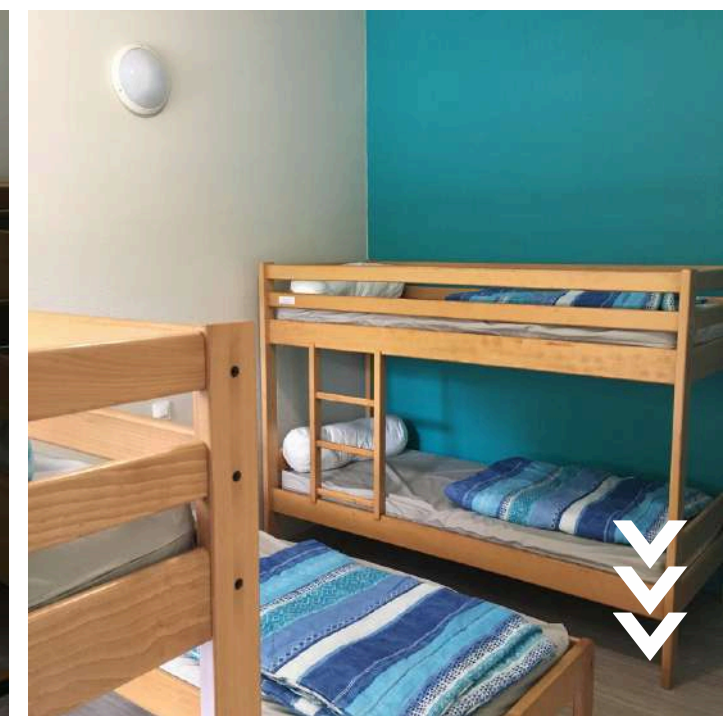
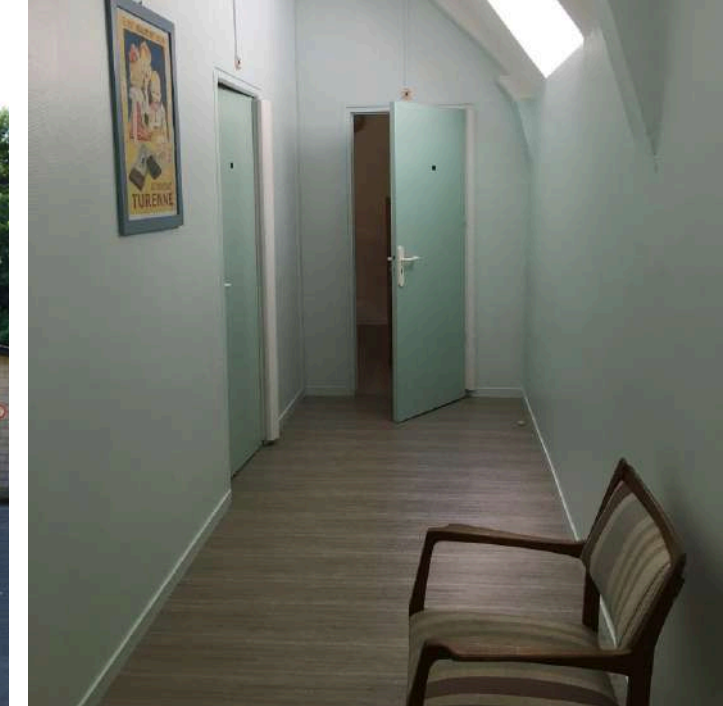
1st floor :

*Rooms with sink
Showers and toilets on the ground floor.*

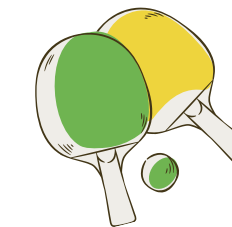
- **8 rooms** with 2 to 6 beds.



The driver is given an individual room in another building, away from the group. Ensuite room.



EQUIPMENTS



INDOORS :

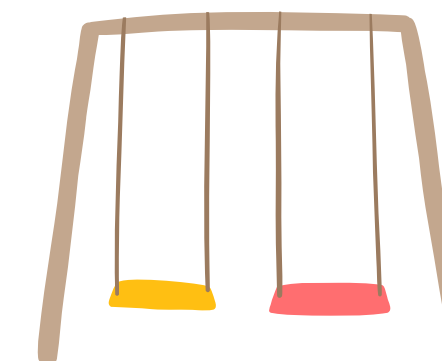
- 1 relaxing area for the teachers with coffee, tea
- 2 classes / activites rooms with tv and a board + table tennis and baby foot



Video projector on demand.

OUTDOORS :

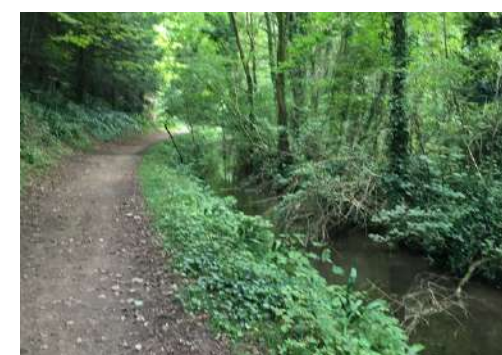
- 17 acres of woodland and copses, accessible by foot from the centre, where groups can organize nature activities such as orienteering for example.
- 1 playground for children with swing, sandpit and slides...
- 1 area to play football



NEARBY ACTIVITES :

- Tennis court
- Riding school in Bernières sur Mer and Courseulles sur Mer
- Aquatic complex at Douvres-la-Délivrande and Caen

- Adventure parks in the woods at Reviere and Hérouville-Saint-Clair



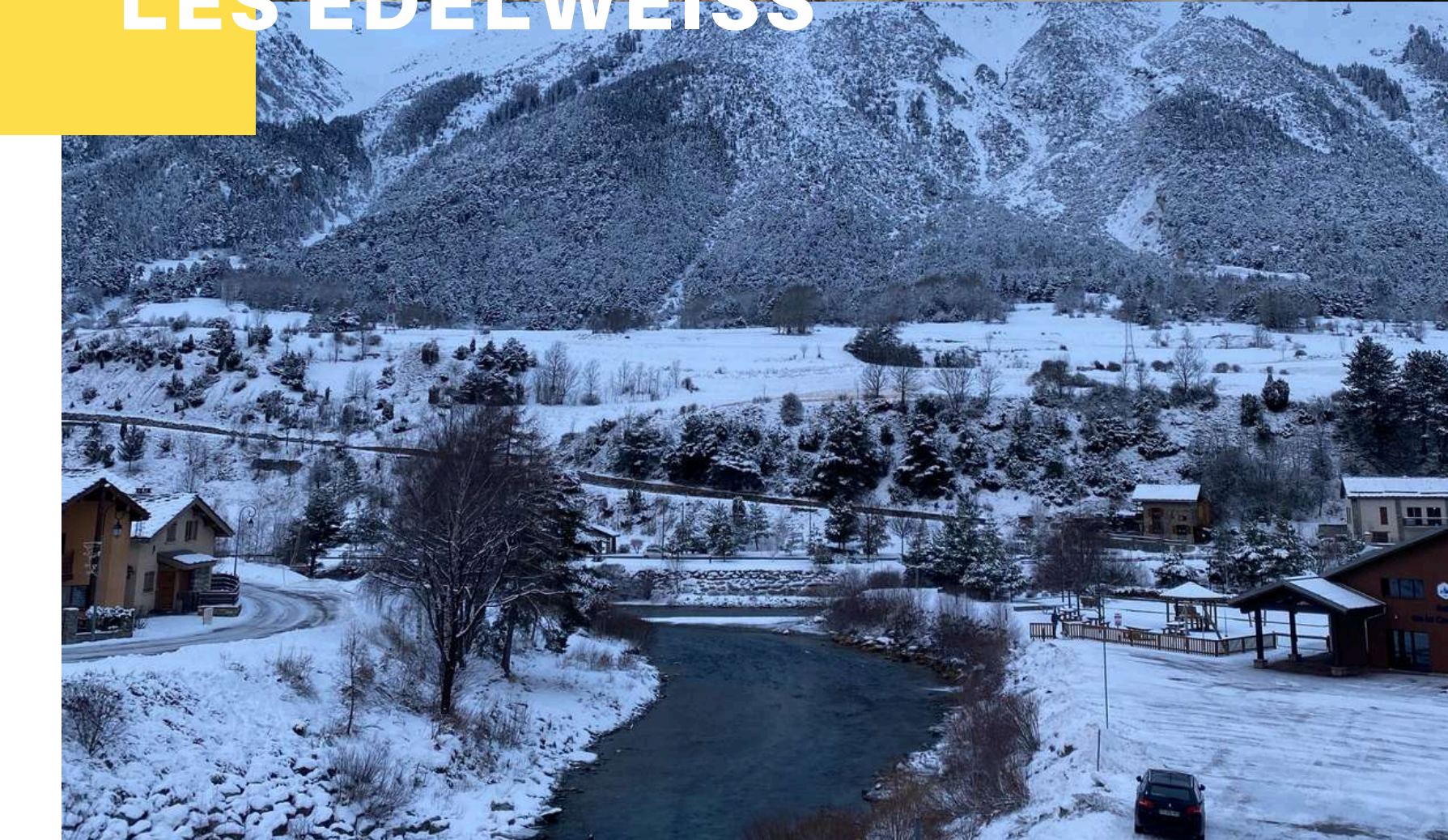


WELCOME

TO OUR TERMIGNON CENTRE



LES EDELWEISS



Our accommodation « **Les Edelweiss** » at TERMIGNON LA VANOISE (first municipality of National Park of Val Cenis) is **right a the foot of the skiing slopes**, with small shops nearby.

Head Office : UNCMT - 4 avenue du Parc Saint André - 14200 HEROUVILLE SAINT CLAIR
+ 33 2 31 46 80 40 - www.uncmt.fr



GEOGRAPHIC LOCATION

UNCMT « Les Edelweiss »

12, Place de la Vanoise

73 500 TERMIGNON - VAL CENIS

Tel. : + 33 4 79 20 50 47

(Informations et Booking + 33 2.31.46.80.40)

Email : lesedelweissuncmt@orange.fr



Paris : 686 km

Lyon : 225 km

Altitude : 1300 m

Saint Jean de Maurienne : 46 km



LES
EDELWEISS



“

The centre is entirely enclosed.

It respects all local and national health, safety, fire and travel industry regulations, for welcoming groups.

The Director is present on site during the group's stay **(including all night long)**.

Our certifications are available on our website : [click here](#).

”



CATERING

Meals are cooked on site . All menus are established one month prior to the group's arrival, according to allergies and special diets (for the participants who have allergic reactions to some ingredients, or who have a special diet (coeliac for example), special dishes (guaranteed free from main allergens) are automatically ordered, with a extra-charge per meal – please contact us)

Regular schedules for breakfast, lunch and dinner :

8:00 AM, 12:00 AM and 7:00 PM.

1 catering room with a 75-person capacity, **with mountain view.**

ACCOMODATION

The total capacity of the centre is up to **75 beds**, allocated onto 3 floors. **All rooms are furnished with a shower and a sink.** Some of them have toilets as well.

- **20 rooms** with 2 to 8 individual beds.
Bunk beds.
- **1 adapted room for people with reduced mobility.**
- **Additional showers** on the ground floor.



Drivers are located away from the group



EQUIPMENTS

INDOORS:

- 3 classrooms with a board and a tv
- 1 relaxation area for the teachers
- 1 ski lock (allows you to drop off the ski stuff) +
- 1 ski room on the slopes



Videoprojector available on demand

OUTDOORS:

- Terrace facing the mountain
- foot of the slopes
- Balcony

NEARBY ACTIVITIES :

- **55 tracks** including 9 green, 18 blue, 23 red, 5 black.
- **125 km of marked trails** including 8 km of free cross-country skiing

- Post Office
- Shops

